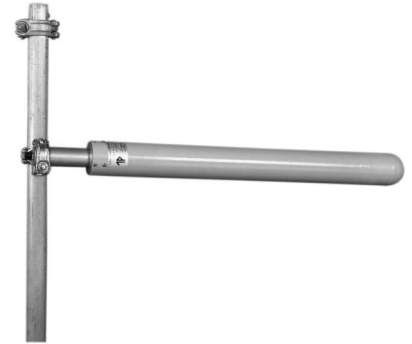


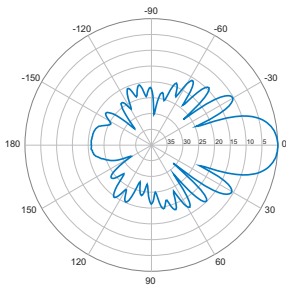
A Shrouded Yagi antenna for Links in the 2.1-2.3 GHz band. All elements are enclosed in a weather resistant, glassfibre shroud to provide consistent, reliable performance in all weather conditions.

7360010

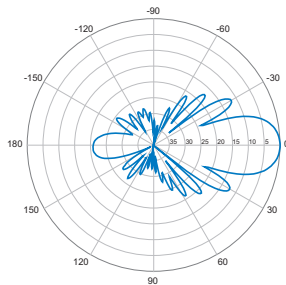
V-Pol or H-Pol | Shrouded Yagi | 27° | 17.0 dBi



Electrical Characteristics	
Frequency band	2100-2300 MHz
Polarization	Vertical or Horizontal
Horizontal beamwidth	27°
Vertical beamwidth	26°
Gain	17.0 dBi
Impedance	50Ω
VSWR	<1.5:1 (<1.3:1 typ.)
Front-to-back ratio	>20 dB
Maximum power	100 W
Connector type	N-Female
Lightning protection	DC Grounded
Mechanical Characteristics	
Materials	Shroud, GRP Radiating assembly, brass Mounting section, 50 mm dia., aluminium
Dimensions (Length)	1090 mm      42.9 in
Weight without bracket	1.6 kg      3.5 lbs
Wind load @ 160 km/hr (100 mph)	100 N      22.5 lbf
Mounting Options	
Mounting bracket	3202078/68
Alternate mounting bracket	0300064/00 + U-Bolts to match mounting pipe diameter
Please order Mounting Bracket separately.	



Horizontal



Vertical